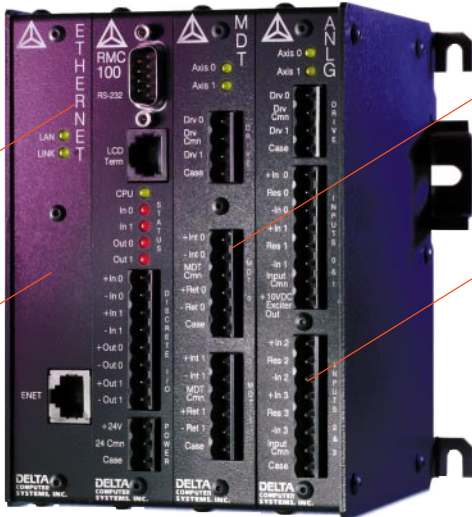


What is it, exactly?



CONTEMPLATE THE FLEXIBILITY OF 5 DIFFERENT COMMUNICATIONS INTERFACES.

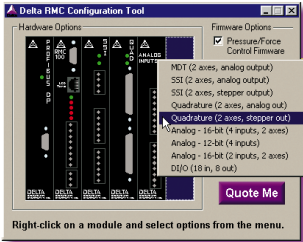
PONDER OVER AT LEAST 25 PROTOCOLS.

ASSUME UP TO 8 AXES.

THINK ABOUT DOZENS OF POSITION AND PRESSURE TRANSDUCERS.

Smart machine designers configure it out for themselves.

To find a motion controller that matches your machine exactly, use Delta's



Motion Controller Configuration Tool.

In seconds you can configure the motion controller that will work best for your application, from well over 500 possibilities. Test it out now at www.deltamotion.com. Then click to

receive a quote. How do machine designers get so smart? Go configure.

DELTA

COMPUTER SYSTEMS

www.deltamotion.com
1-360-254-8688